

CURVE-TO-RIGHT-CROSS-CUT STROKE

Scientific Stroke

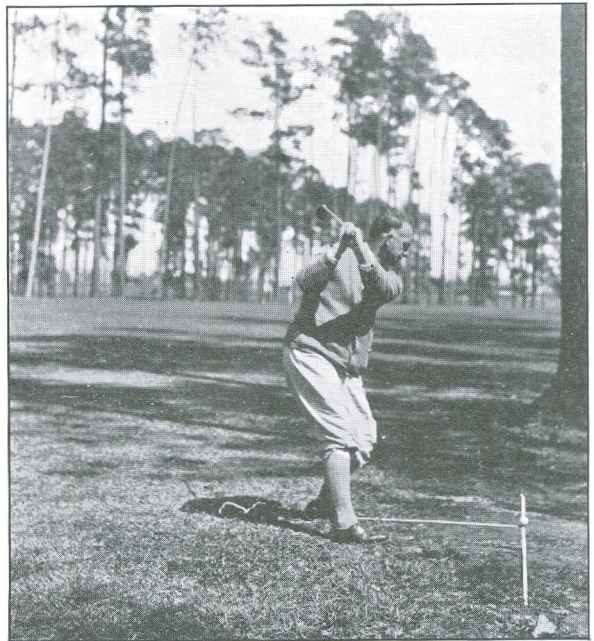
To curve a ball sharply to the right to circumvent a tree or other obstacle, aim to left and swing the club in a course across the line of play swinging club down outside line of play cutting across to inside line of play.

At impact club face must be at "offset" facing somewhat to the right by having club handle somewhat ahead of the club head. Also hit off heel end of club face. Experiment alone can teach how much of each is required to produce a certain amount of curve in the ball's flight. See class 2 Slice, page 75.

t by having club handle somewhat ahead



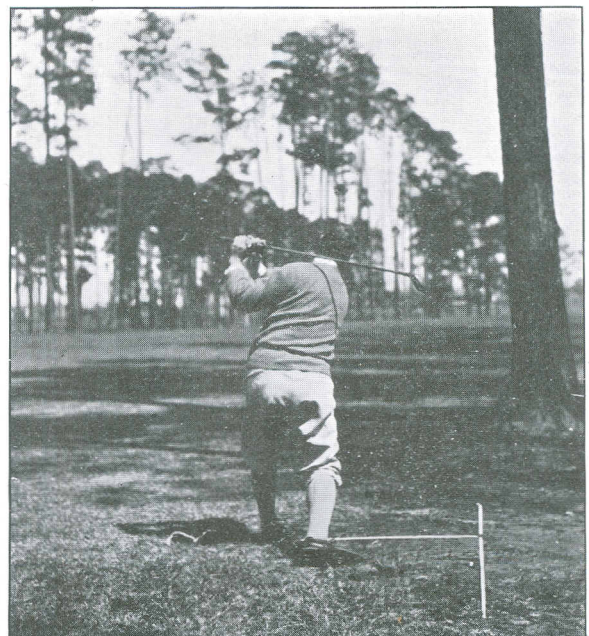
357



358



359



360

CURVE-TO-RIGHT-CROSS-CUT STROKE

eliminate the trouble. Slicers should learn to get the club head through on time with the handle. In this way the slice will be cured and distance gained instead of lost. In some cases,

Presented To

UNITED STATES GOLF ASSOCIATION

By H. H. Ramsay

Date 1937

RETURN TO:

UNITED STATES GOLF ASSOCIATION

40 EAST 38th STREET

NEW YORK 18 N.Y.